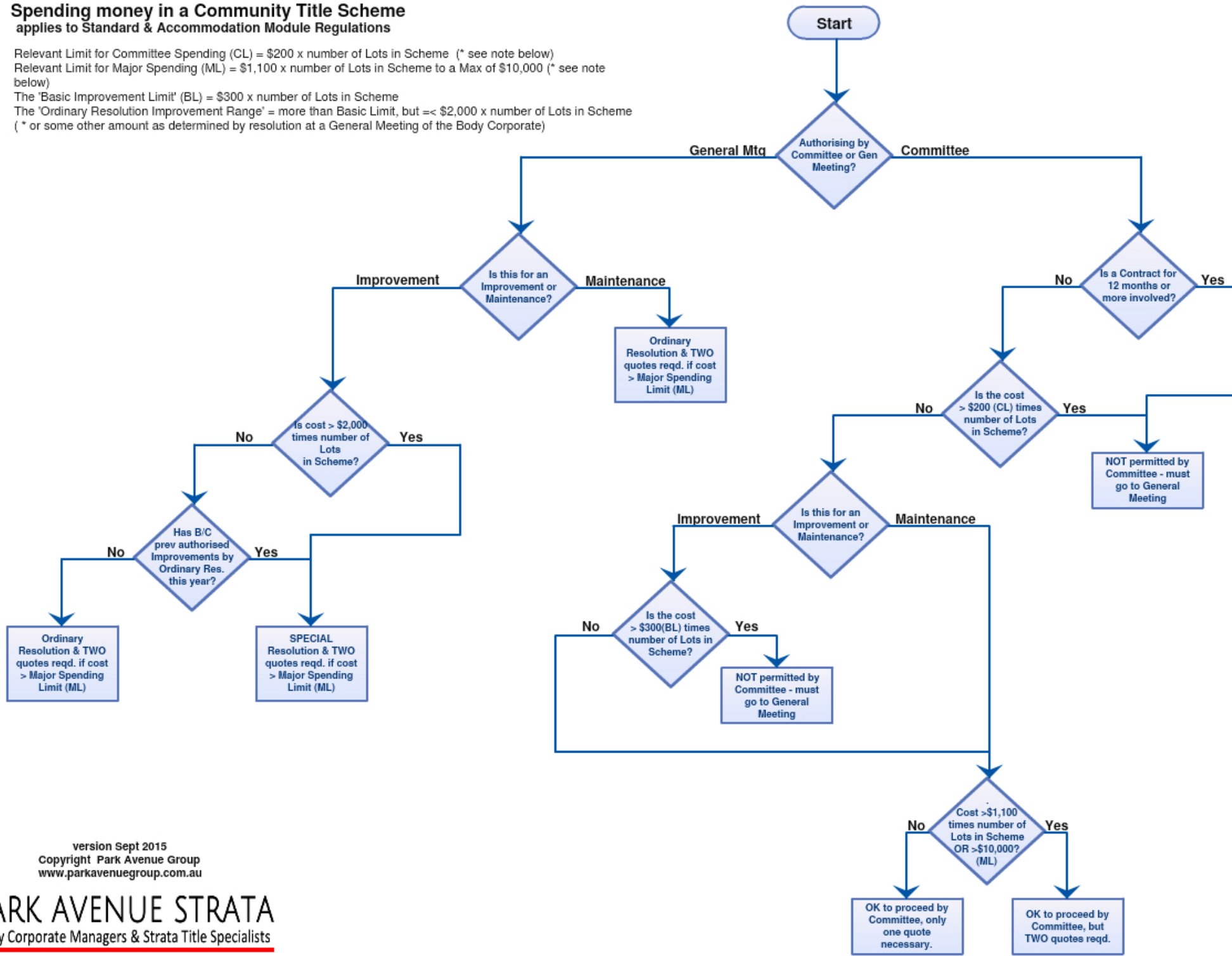


Spending money in a Community Title Scheme
 applies to Standard & Accommodation Module Regulations

Relevant Limit for Committee Spending (CL) = \$200 x number of Lots in Scheme (* see note below)
 Relevant Limit for Major Spending (ML) = \$1,100 x number of Lots in Scheme to a Max of \$10,000 (* see note below)
 The 'Basic Improvement Limit' (BL) = \$300 x number of Lots in Scheme
 The 'Ordinary Resolution Improvement Range' = more than Basic Limit, but =< \$2,000 x number of Lots in Scheme
 (* or some other amount as determined by resolution at a General Meeting of the Body Corporate)



version Sept 2015
 Copyright Park Avenue Group
 www.parkavenuegroup.com.au